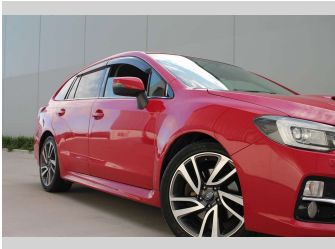


# 2015 Subaru Levorg



### Purchase Price

**\$11,999**

Includes GST  
Excludes on-road costs of \$400

Finance may be available on this vehicle. Ask one of our friendly staff for more information.

Gain peace of mind with Mechanical Breakdown Insurance. **Ask us how.**

### Top features

None Listed

Body Style  
**5 door, Station Wagon**

Odometer  
**152,000 km**

Engine  
**1999 cc**

Fuel Type  
**Petrol**

Transmission  
**Automatic**

Wheels  
**-**

VIN  
**-**

Interior  
**Black**

Safety



Based on 2025 VSRR rating

Reg No.  
**RNQ912**

Ext Colour  
**Red**

History  
**-**

Seats  
**5 seats**

CO2 Emissions  
**★★★★☆**  
**165 grams/km**

Energy Economy  
**★★☆☆☆**

**Annual fuel cost of \$2,780**  
**7.1L per 100km**

Cost per year is an estimate based on petrol price of \$2.80 per litre and an average distance of 14000 km. Emissions and Energy Economy figures standardised to 3P WLTP.

**Stock ID: 7311**